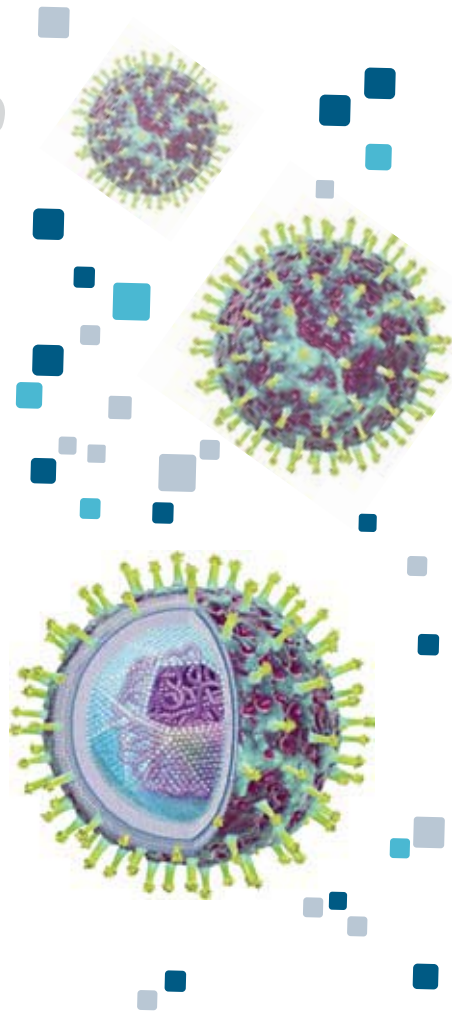


AmpliSens

biotechnologies



InterLabService (ILS) presents AmpliSens® PCR and Real-Time PCR kits developed and produced by Russian Central Research Institute for Epidemiology

Key features:

- wide range of pathogen detection
- high specificity and sensitivity
- ready-to-use reagents pre-dispensed into PCR tubes
- cost-effectiveness

AmpliSens® PCR & Real-Time PCR kits

Respiratory Infections

- Direct pathogen detection in clinical samples
- Rapid monitoring of the most common viral and bacterial pathogens
- Differential diagnosis
- Investigation of a wide range of specimen types



Sampling

Specimen types:

- nasal and oropharyngeal swabs;
- sputum and nasopharyngeal or tracheal aspirates;
- bronchoalveolar lavage or bronchial washing fluid;
- biopsy and autopsy material;
- samples obtained from birds and animals; environmental probes.

Recommended transport media:

- transport medium with mucolytic agent (Cat. № 952-CE);
- transport medium for storage and transportation of respiratory swabs (Cat. № 957-CE).

DNA/RNA extraction

Recommended extraction kits (based on silica sorbtion and precipitation methods):

- RIBO-prep (Cat. № K2-9-Et-100-CE / K2-9-Et-50-CE);
- RIBO-sorb (Cat. № K2-1-Et-100-CE / K2-1-Et-50-CE);
- DNA-sorb B (Cat. № K1-2-100-CE / K1-2-50-CE);
- DNA-sorb C (Cat. № K1-6-50-CE).

Reverse transcription:

Recommended RT reagents kit:

- Reverta-L (Cat. № K3-4-100-CE / K3-4-50-CE)

* For more detailed information please refer to corresponding instructions and guidelines on our website: www.interlabservice.ru/en/catalog/

AmpliSens® PCR and Real-Time PCR kits

• Viral pathogens Detection and Genotyping (G)

| Kit | | Cat. № | Sensitivity | Pathogen detection & internal control (ic) |
|--|-----|--|--|---|
| AmpliSens® Influenza virus A H5N1 | FRT | R-V33(RG)-CE R-V33(iQ)-CE R-V33(SC)-CE | 5x10 ³ copies/ml | A ic A/H5 A/N1 |
| | FEP | V33-50-R0,2-FEP-CE | | |
| AmpliSens® Influenza virus A/H1-swine | FRT | R-V55(RG)-CE R-V55-F(SC)-CE | 1x10 ³ copies/ml (RIBO-prep) 5x10 ³ copies/ml (RIBO-sorb) (nasal/ oropharyngeal swabs) | ic A/H1 (sw2009) |
| | FEP | V55-50-R0,2-FEP-CE | | |
| AmpliSens® Influenza virus A/B | FRT | R-V36(RG)-CE R-V36(iQ)-CE R-V36(SC)-CE | (G) 1x10 ⁴ copies/ml | ic B A |
| | FEP | R-V36-R0,2-FEP-CE | | |
| | EPh | V36-50-R0,2-CE | (G) 1x10 ⁴ copies/ml | • A (365 b.p.) • B (196 b.p.) • ic (550 b.p.) |
| AmpliSens® Influenza virus A-type | FRT | R-V54(RG)-CE R-V54(iQ,Dt)-CE | 1x10 ³ copies/ml | ic H1 N1 ic H3 N2 |
| | FEP | V54-50-R0,2-FEP-CE | | |
| AmpliSens® Parainfluenza virus | FRT | R-V51(RG)-CE | 5x10 ³ copies/ml | ic type 3 type 1 ic type 2 type 4 |
| AmpliSens® hRSV (human Respiratory Syncytial virus) | FRT | R-V37(RG)-CE | 1x10 ³ GE/ml | ic hRSV |
| | FEP | V37-50-R0,2-FEP-CE | | |
| AmpliSens® Adenovirus | EPh | V23-50-R0,2-CE | 5x10 ³ GE/ml | • hAdv (462 b.p.) |
| AmpliSens® SARS-Coronavirus | EPh | TV29-100-R0,2-CE | 5x10 ³ GE/ml | • SARS-Cov (221 b.p.) • ic (400 b.p.) |

• Bacterial pathogens Detection and Quantitation (Q)

| Kit | | Cat. № | Sensitivity | Pathogen detection & internal control (ic) |
|--|-----|-----------------------|--|--|
| AmpliSens® Legionella pneumophila | FRT | R-B50(RG)-CE | (Q) 1x10 ³ GE/ml | ic <i>L.pneumophila</i> |
| | FEP | B50-R0,2-FEP-CE | 1x10 ³ copies/ml | |
| AmpliSens® MTC (<i>Mycobacterium tuberculosis</i> complex: <i>M. tuberculosis</i> , <i>M. bovis</i> , <i>M. bovis BCG</i> , <i>M. africanum</i> , <i>M. microti</i> , <i>M. canetti</i> , <i>M. pinipedii</i>) | FRT | R-B57(RG,iQ,SC,Dt)-CE | 1x10 ² -1x10 ³ cells (depending on specimen type and extraction method) 2.5x10 ² copies/ml (washing fluids from environmental objects) | MTC ic |
| | FEP | B57-FEP-CE | | |
| AmpliSens® MBT (<i>Mycobacterium tuberculosis</i> complex) | EPh | B15-100-R0,2-CE | 1x10 ³ GE/ml (BAL, urine) 5x10 ³ GE/ml (sputum) | • MTC (390 b.p.) • ic (750 b.p.) |

Compatible instruments:

FRT – Fluorescent Real-Time detection: Rotor-Gene 3000/6000 (Corbett Research), Rotor-Gene Q (QIAGEN), iCycler iQ/iQ5 (Bio-Rad), Smart Cycler (Cepheid), DT-96 (DNA-Technology)

FEP – Fluorescent End-Point detection: requires an appropriate thermocycler and fluorometer (e.g. ALA-1/4, BioSan)

EPh – Electrophoresis in agarose gel: requires an appropriate thermocycler and electrophoretic equipment



iCycler iQ/iQ 5
(Bio-Rad)



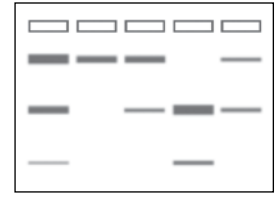
Rotor-Gene Q
(QIAGEN)



Smart Cycler
(Cepheid)



ALA-1/4
(BioSan)



Reagents arrangement:

- ⇓ reaction mix (primers and probes) is pre-dispensed into individual PCR tubes under wax
- ⇓ all reagents are in separate vials (not pre-dispensed into PCR tubes) + Taq-F polymerase («hot start»)

Detecting channels:

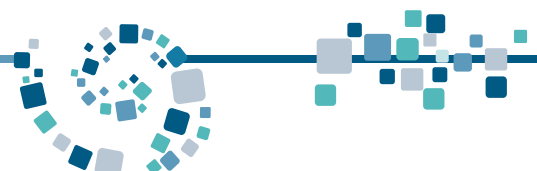
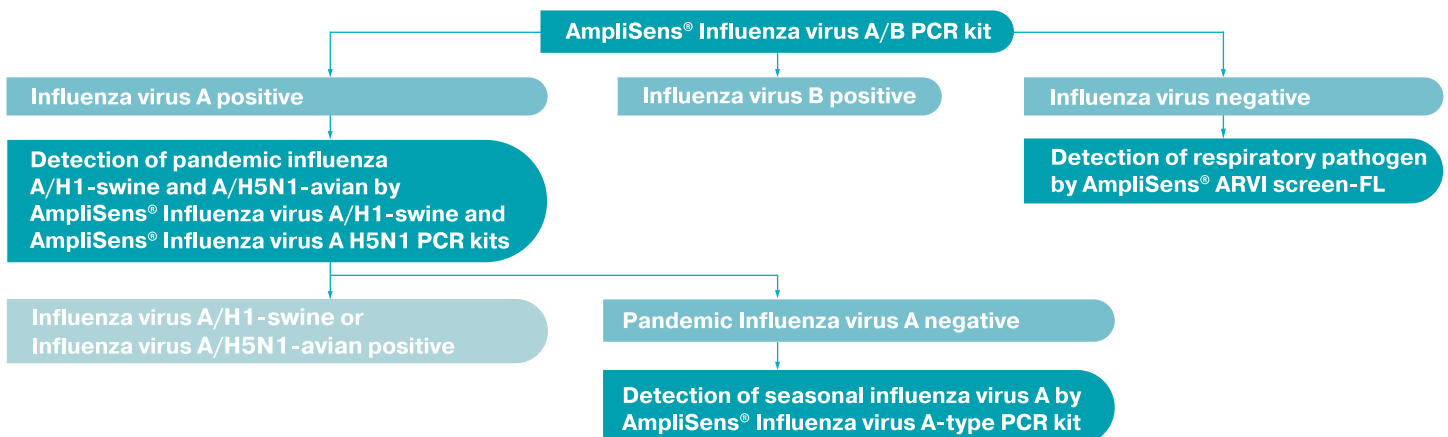
| | |
|------------|------------|
| FAM/Green | JOE/Yellow |
| ROX/Orange | |

AmpliSens® MultiPrime

• Multiplex Pathogen Detection

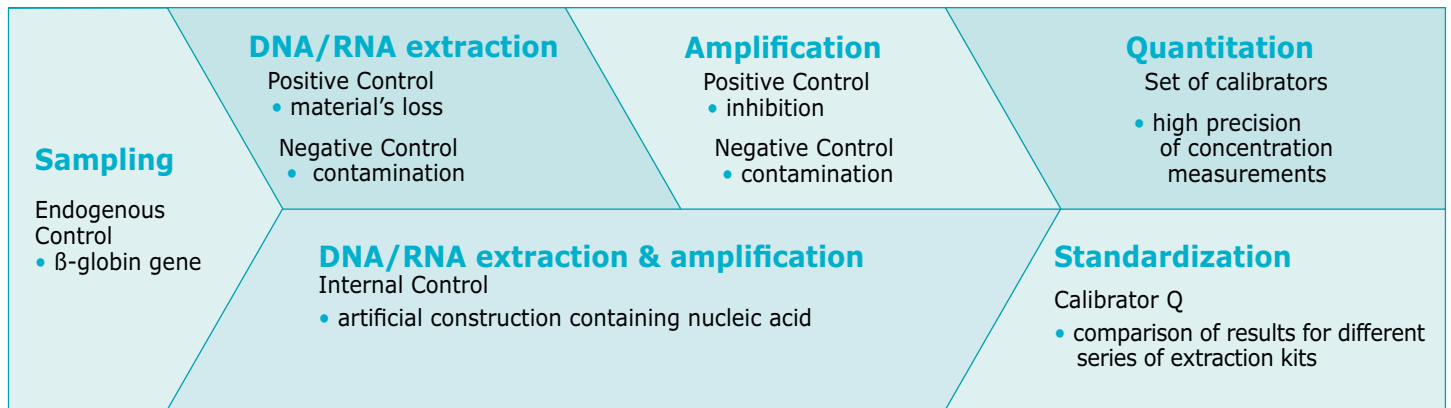
| Kit | | Cat. № | Sensitivity | Pathogen detection & internal control (ic) |
|---|-------|------------------------------------|--|---|
| AmpliSens® Mycoplasma pneumoniae/ Chlamydia pneumoniae | FRT ⇓ | R-B42-4x(RG)-CE R-B42-4x(iQ)-CE | 1x10 ³ GE/ml | <ul style="list-style-type: none"> <i>M.pneumoniae</i> ic <i>C.pneumoniae</i> |
| | FEP ⇓ | B42-50-R0,2-FEP-CE | | |
| AmpliSens® ARVI-screen (Human Respiratory Syncytial virus; Human Metapneumovirus; Human Parainfluenza virus 1-4; Human Rhinovirus 100 serotypes; Human Coronavirus E229, NL63, OC43, HKUI; Human Adenovirus B, C, E; Human Bocavirus) | FRT ⇓ | R-V57-100-F(RG,iQ,Dt)-CE | 1x10 ³ GE/ml (hRSV, hMpv, hBov, hRV, hPiv 1-4,) | <ul style="list-style-type: none"> ic hRSV hMpv |
| | | | 5x10 ³ GE/ml (hAdv B, C, E) | <ul style="list-style-type: none"> ic hPiv 2 hPiv 4 |
| | | | 1x10 ⁴ GE/ml (hCov) | <ul style="list-style-type: none"> ic hCov E229/NL 63 hCov OC43/HKUI |
| | | | | <ul style="list-style-type: none"> ic hBov hAdv B, C, E |
| | | | | <ul style="list-style-type: none"> ic hPiv 3 hPiv 1 |
| | | | | <ul style="list-style-type: none"> ic hRv (100 STs) |

Workflow for detection of viral respiratory pathogens



AmpliSens® PCR and Real-Time PCR kits

Entire control of PCR workflow



Exact number of controls is defined to each AmpliSens PCR and Real-Time PCR kit according to their relevance and importance specified by the manufacturer

Convenient packaging

• Two variants of packaging:

| | |
|---|---|
|  <p>kit contains PCR tubes with pre-dispensed reaction mixture under wax</p> |  <p>kit contains individual vials with all necessary reagents:</p> <ul style="list-style-type: none"> • Taq-F polymerase («hot start») • mixes with primers and probes • buffers |
|---|---|



For each AmpliSens PCR and Real-Time PCR kit, variants of packaging are mentioned in the Product List and corresponding booklet

• Pretested DNA/RNA extraction kits, transport and storage media are available



Olsuf'evskiy per., 8/1, 119021, Moscow, Russia
 Tel.: +7 (495) 664 28 84 | Fax: +7 (495) 664 28 89
 pcr@interlabservice.ru